

ONCE UPON A TIME

QUILT DESIGNED BY AGFstudio

BEDTIME Stories



FABRICS DESIGNED BY ELIZABETH CHAPPELL



Fabric A
BES31102
MCGREGOR'S PATCH



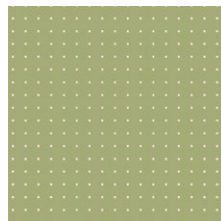
Fabric B
BES31106
SOMBUNNY SPECIAL



Fabric C
BES31107
PERFECT SPOONFUL



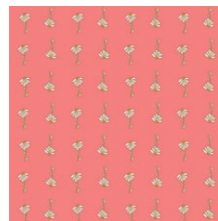
Fabric D
BES31105
THE BLUE FAIRY



Fabric E
BES31104
DAY TRIP VERT



Fabric F
BES31100
LITTLE BRIAR ROSE



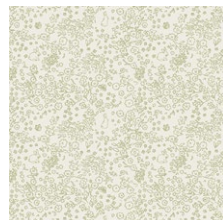
Fabric G
BES31109
DAISY SYMPHONY



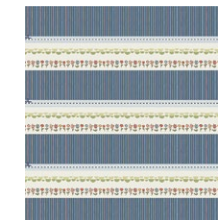
Fabric H
PE451
SPROUT



Fabric I
PE435
BANANA CREAM



Fabric J
BES31103
SOMBUNNY FRESH



Fabric K (Binding)
BINBES31
STORY BOUND



(Backing)
BES31101
TALES UNFOLDED



ONCE UPON A TIME

FINISHED SIZE | 88" x 88"

FABRIC REQUIREMENTS

Fabric A	BES31102	$\frac{5}{8}$ yd.
Fabric B	BES31106	1 $\frac{1}{2}$ yd.
Fabric C	BES31107	$\frac{3}{8}$ yd.
Fabric D	BES31105	$\frac{5}{8}$ yd.
Fabric E	BES31104	1 $\frac{1}{8}$ yd.
Fabric F	BES31100	$\frac{7}{8}$ yd.
Fabric G	BES31109	1 $\frac{1}{8}$ yd.
Fabric H	PE541	1 yd.
Fabric I	PE435	$\frac{7}{8}$ yd.
Fabric J	BES31103	3 $\frac{1}{4}$ yd.
Fabric K	BINBES31	$\frac{3}{4}$ yd.

BACKING FABRIC
BES31101 8 yds (*Suggested*)

BINDING FABRIC
Fabric **K** BINBES31 (*Included*)

CUTTING DIRECTIONS

*$\frac{1}{4}$ " seam allowances are included.
WOF means width of the fabric.*

Fabric A:

- Five (5) $9\frac{3}{4}$ " squares.

Fabric B:

- Eighteen (18) $9\frac{3}{4}$ " squares.

Fabric C:

- Two (2) $9\frac{3}{4}$ " squares.

Fabric D:

- Five (5) $9\frac{3}{4}$ " squares.

Fabric E:

- Thirteen (13) $9\frac{3}{4}$ " squares.

Fabric F:

- Nine (9) $9\frac{3}{4}$ " squares.

Fabric G:

- Nine (9) $9\frac{3}{4}$ " squares.
- Sixteen (16) $4\frac{1}{2}$ " squares.

Fabric H:

- Twelve (12) $9\frac{3}{4}$ " squares.

Fabric I:

- Nine (9) $9\frac{3}{4}$ " squares.

Fabric J:

- Eight (8) $9\frac{3}{4}$ " squares.
- Four (4) $32\frac{1}{2}$ " x $4\frac{1}{2}$ " rectangles.
- Four (4) $28\frac{1}{2}$ " x $4\frac{1}{2}$ " rectangles.
- Four (4) $20\frac{1}{2}$ " x $4\frac{1}{2}$ " rectangles.
- Four (4) $16\frac{1}{2}$ " x $4\frac{1}{2}$ " rectangles.
- Twelve (12) $12\frac{1}{2}$ " x $4\frac{1}{2}$ " rectangles.
- Twelve (12) $8\frac{1}{2}$ " x $4\frac{1}{2}$ " rectangles.
- Four (4) $4\frac{1}{2}$ " squares.

Fabric K:

- Nine (9) WOF x $2\frac{1}{2}$ " strips. (Binding)

CONSTRUCTION

Sew all right sides together with $\frac{1}{4}$ " seam allowance.

Eight at a time HST (Half Square Triangle)

- Pair one (1) $9\frac{3}{4}$ " squares from fabrics **A** and **E** and align both squares right sides facing.
- Draw two diagonal lines on the back of the fabric. (See Fig 2)
- Stitch at scant $\frac{1}{4}$ " from each side of the drawn lines. (See Fig 3)
- Cut your piece following the red lines. (See Fig 4).
- Open pieces and press.
- Repeat this step one more time with the same fabrics. You should have a total of sixteen (16) **A-E** HST. Trim each piece to $4\frac{1}{2}$ ".

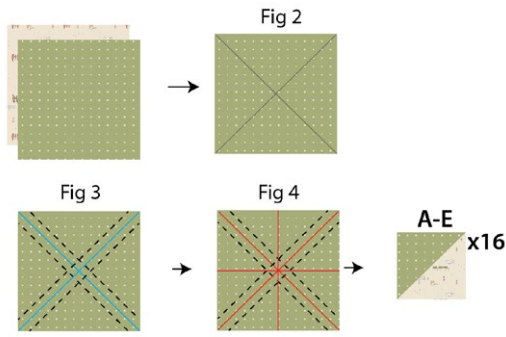
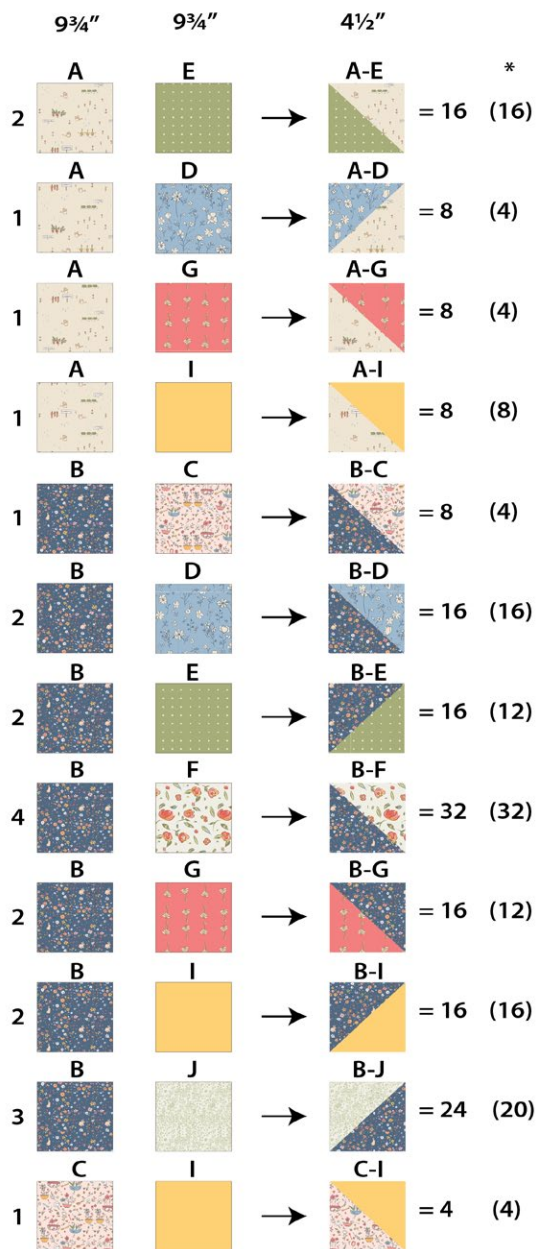


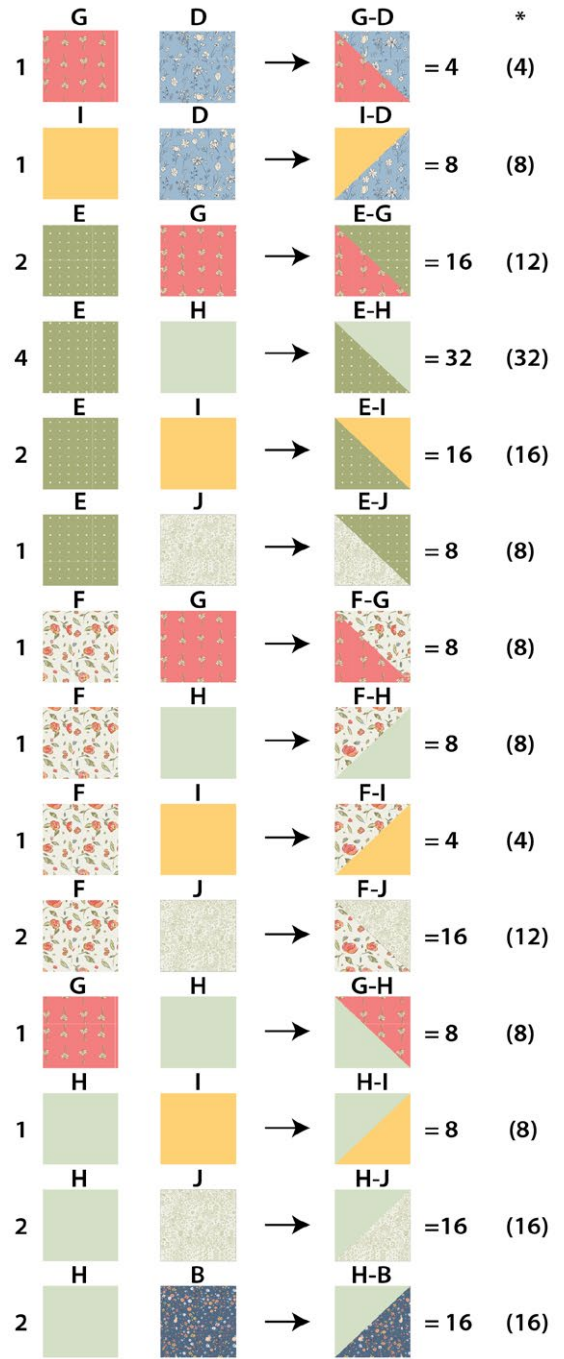
DIAGRAM 1

- Repeat the eight at a time HST method and make the following combinations. See diagrams 2 and 3.



* ()quantity of squares you will need

DIAGRAM 2



* ()quantity of squares you will need

DIAGRAM 3

- After you have all the HST combinations ready we will make four (4) identical blocks.

